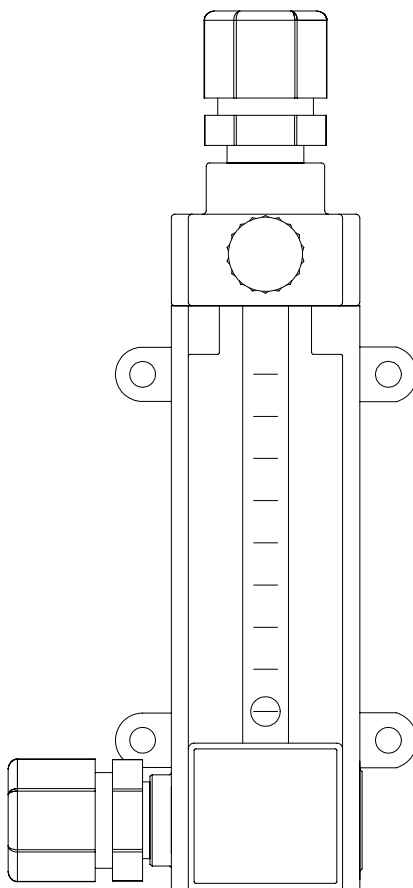

Instruction Bulletin - Series *NXT3000*
Meter Assembly,
1-500 PPD (10 kg/h) Maximum



CAPITAL CONTROLS



1 - 500 PPD (2 - 10 kg/h) Maximum

These instructions describe the installation, operation and maintenance of the subject equipment. Failure to strictly follow these instructions can lead to an equipment rupture that may cause significant property damage, severe personal injury and even death. If you do not understand these instructions, please call Severn Trent Water Purification for clarification before commencing any work at 215-997-4000 and ask for a Field Service Manager. Severn Trent Water Purification, Inc. reserves the rights to make engineering refinements that may not be described herein. It is the responsibility of the installer to contact Severn Trent Water Purification, Inc. for information that cannot be answered specifically by these instructions.

Any customer request to alter or reduce the design safeguards incorporated into Severn Trent Water Purification equipment is conditioned on the customer absolving Severn Trent Water Purification from any consequences of such a decision.

Severn Trent Water Purification has developed the recommended installation, operating and maintenance procedures with careful attention to safety. In addition to instruction/operating manuals, all instructions given on labels or attached tags should be followed. Regardless of these efforts, it is not possible to eliminate all hazards from the equipment or foresee every possible hazard that may occur. It is the responsibility of the installer to ensure that the recommended installation instructions are followed. It is the responsibility of the user to ensure that the recommended operating and maintenance instructions are followed. Severn Trent Water Purification, Inc. cannot be responsible deviations from the recommended instructions that may result in a hazardous or unsafe condition.

Severn Trent Water Purification, Inc. cannot be responsible for the overall system design of which our equipment may be an integral part of or any unauthorized modifications to the equipment made by any party other than Severn Trent Water Purification, Inc.

Severn Trent Water Purification, Inc. takes all reasonable precautions in packaging the equipment to prevent shipping damage. Carefully inspect each item and report damages immediately to the shipping agent involved for equipment shipped "F.O.B. Colmar" or to Severn Trent Water Purification for equipment shipped "F.O.B Jobsite". Do not install damaged equipment.

**SEVERN TRENT SERVICES, COLMAR OPERATIONS
COLMAR, PENNSYLVANIA, USA
IS ISO 9001: 2000 CERTIFIED**

Table of Contents

1	INTRODUCTION	4
1.1	General	4
1.2	Warranty and Service	4
1.3	Meter Assembly Data	4
1.4	Multiple Meter Assemblies	4
2	OPERATION	5
2.1	General	5
2.2	Installation	5
3	START-UP	8
4	SERVICE	10
5	TROUBLESHOOTING CHART	11
	FIGURES	
1	Basic System Schematic	6
2	Basic Assembly Procedures	7
3	Multiple Meter Assembly	8
4	Meter Assembly Dimensions	9

1 INTRODUCTION

1.1 General

The Capital Controls meter assemblies are expertly engineered and carefully tested to assure years of satisfactory operation. The meter assemblies may be mounted directly on the vacuum regulator or remotely mounted. Proper installation and care will ensure the best operation. Read instructions carefully and retain for future reference.

These instructions cover Series *NXT3000* Meter assemblies only. Refer to the following for other components in the gas feed system.

Meter Assembly Dimensions - 100D1027

Vacuum regulator -100.6701

Ejector - 122.6060

1.2 Warranty and Service

See 005.9001 for Capital Controls equipment warranty.

NOTE: The Series *NXT3000* Meter Assembly is designed for use with a Series *NXT3000* gas feeder. The Capital Controls equipment warranty and service policy is null and void, as it pertains to user protection, if the Series *NXT3000* Meter Assembly is misapplied.

1.3 Meter Assembly Data

Meter tube scale length: 4"

Each meter assembly is furnished with 3/8", 1/2" and 5/8" tubing fittings. Refer to the capacity chart below for recommended minimum tubing sizes to be used with each capacity. Tubing sizes may have to be increased for long vacuum line runs. Refer to Bulletin 121.3003.

Capacities Available for Chlorine and Sulfur Dioxide	Minimum Inlet & Outlet Tubing Connection sizes
1, 3, 10, 25, 50, 100 PPD (20, 60, 200, 500 g/h, 1, 2 kg/h)	3/8"
200 PPD (4 kg/h)	1/2"
300, 500 PPD (5, 10 kg/h)	5/8"

Capacities Available for Ammonia	Minimum Inlet & Outlet Tubing Connection sizes
5, 10, 25, 50, 100 PPD (30, 100, 250, 500 g/h, 1 kg/h)	3/8"
100 PPD (2 kg/h)	1/2"
250 PPD (5, 10 kg/h)	5/8"

When ganged meter assemblies are used, determine the proper tubing size by adding together all the meter capacities in the final assembly and refer to the chart above.

1.4 Multiple Meter Assemblies

Multiple Meter Assemblies may be made up by connecting up to five (5) individual meter assemblies into one unit for multiple feed points.

2 OPERATION

2.1 General

The meter assembly is designed to complement the Capital Controls' Series *NXT3000* vacuum regulators. The meter assembly is a variable area type meter and provides visual indication of the gas flow rate set by the internally mounted manual rate valve.

The rate valve is located at the meter outlet (top) and is sized to match the meter capacity.

The capacity range of each flowmeter-rate valve assembly is clearly indicated by a calibrated scale, direct reading in pounds per day (lb/d) and grams per hour (g/h) or kilograms per hour (kg/h), etched on the flowmeter tube.

The meter assembly on a gas feed system with an automatic Chloromatic rate valve assembly will have the rate valve knob glued in place on the outlet fitting.

NOTE: When two meter assemblies will be used in series, (one mounted on the vacuum regulator and one remote mounted) one of the meter assemblies must be supplied as an automatic unit, without rate valve. The second meter assembly will be supplied as a manual unit with rate valve.

2.2 Installation - See Figures 1, 2, 3 and 4

The meter assembly must be installed in an upright and level position in order to function properly.

Each meter assembly comes complete with the necessary o-ring seals, mounting feet and tubing fittings to accommodate either mounting directly on a vacuum regulator or a wall. The parts supplied will allow the meter assemblies to be ganged together to form a multipoint meter assembly of up to five (5) units. Tubing connectors are also provided to allow using interconnecting tubing sizes of 3/8", 1/2" or 5/8".

For a manually controlled system the meter assembly is installed between the vacuum regulator and the ejector. For an automatically controlled system the meter assembly is installed between the automatic control valve and the vacuum regulator. Mount the meter panel using suitable screws, bolts and anchors appropriate for the mounting surface.

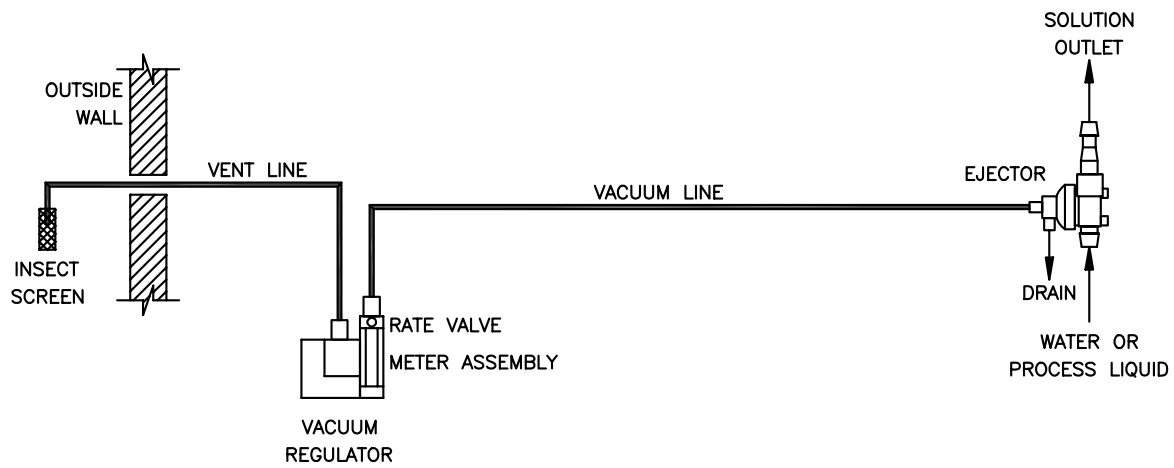
When the meter assembly is to be mounted on a wall, locate it so that it is upright on a vertical surface convenient for observation and operation.

Black polyethylene tubing is normally used for the vacuum line. Do not kink this tubing. It may be desirable to use tubing connectors, tees or elbows to provide as direct run as possible and minimize kinking conditions. Use enough tubing length to allow movement of the vacuum regulator for servicing or cylinder change.

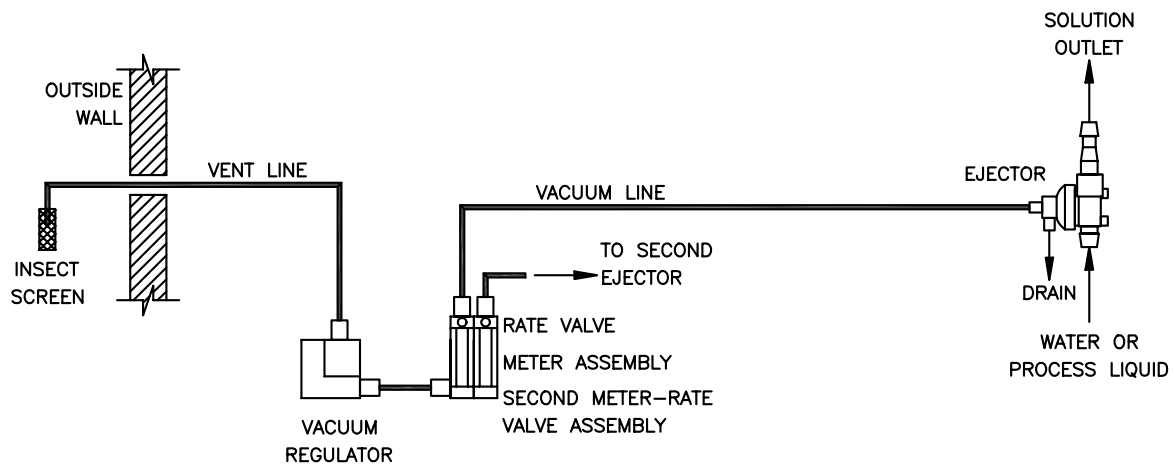
When attaching tubing to the tubing fittings, tighten the connector nut **HAND TIGHT**.

General Design Note: Routing vacuum tubing through unventilated conduit is discouraged. A minute portion of gas flowing through tubing under vacuum conditions, will slowly diffuse at a molecular level through its walls and collect in the closed conduit over an extended period of time.

SINGLE REGULATOR SYSTEM
USING INTEGRALLY MOUNTED METER-RATE VALVE ASSEMBLY



SINGLE REGULATOR SYSTEM
USING ONE OR MORE WALL MOUNTED METER-RATE VALVE ASSEMBLIES



DUAL REGULATOR SYSTEM
USING ONE OR MORE WALL MOUNTED METER-RATE VALVE ASSEMBLIES
(ARRANGED FOR AUTOMATIC CHANGEOVER)

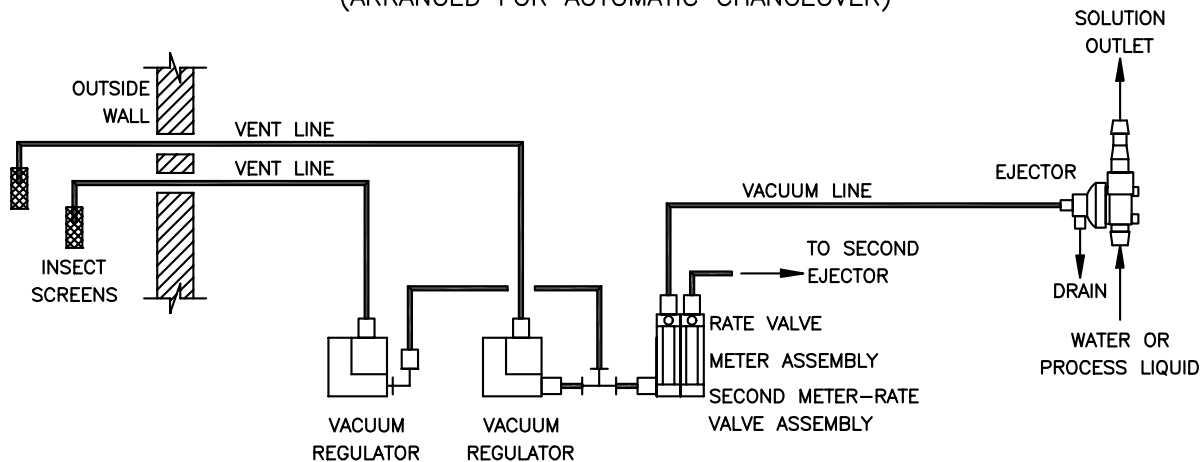
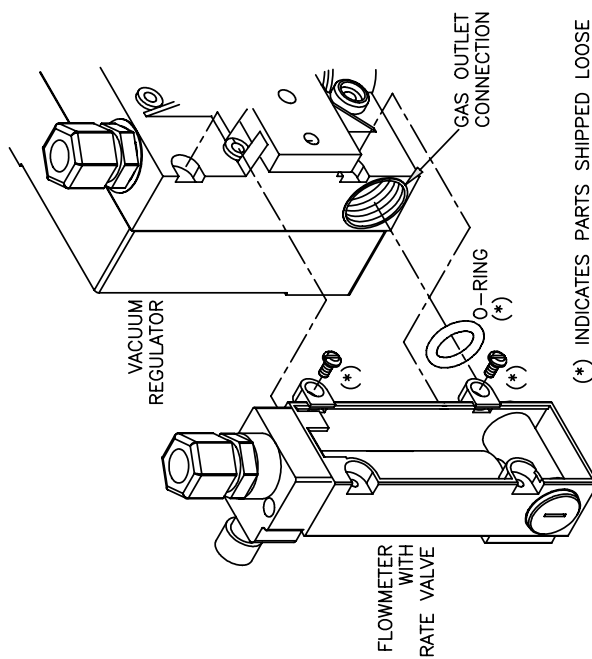


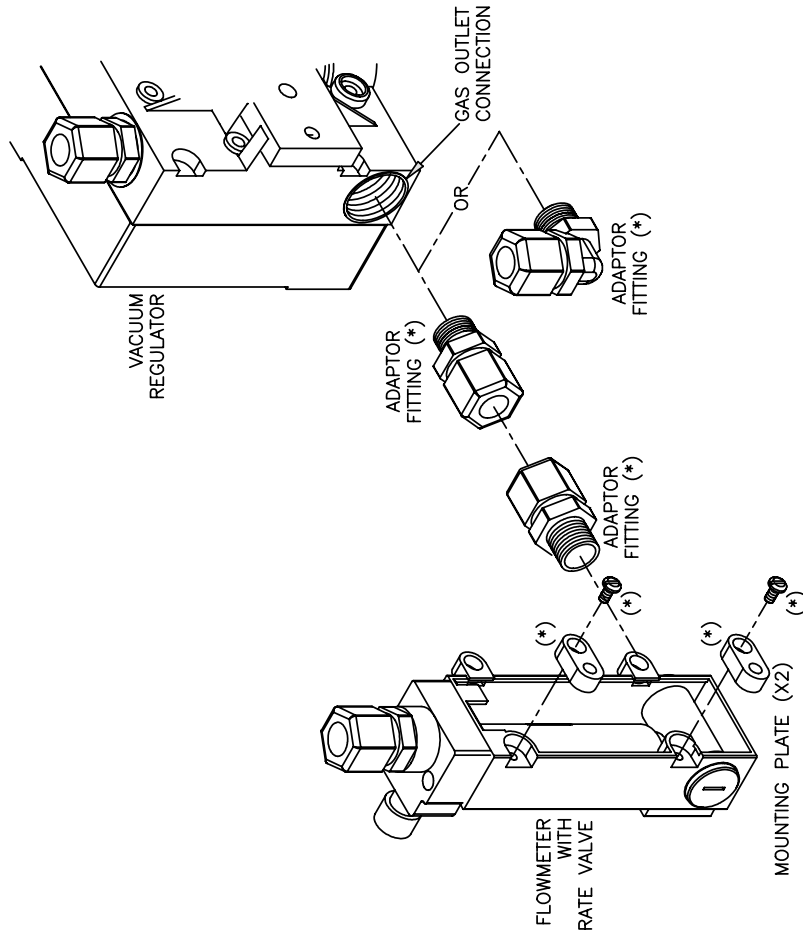
Figure 1 - Basic System Schematics



INTEGRAL MOUNTING METER ASSEMBLY ON VACUUM REGULATOR

Seat the seal O-ring in the outer counterbore of the gas outlet connection of the vacuum regulator. Then mount the flowmeter-rate valve assembly on the side of the regulator as indicated.

Set aside the mounting plates and adaptor fittings (loose packaged to permit for optional wall mounting) which are not needed in this application.



PREPARING METER ASSEMBLY FOR WALL MOUNTING

Install the mounting plates on the rear of the meter assembly as indicated. Then install the adaptor fitting(s), as required, in the gas outlet connection of the vacuum regulator(s).

If only one flowmeter-rate valve assembly is used, install the adaptor fitting, as indicated, in the gas inlet connection of this component. Then mount as described in Figure 5 and complete the interconnections as shown in Figure 1. Or, if two or more meter assemblies are used, proceed as directed in Figure 3.

Figure 2 - Basic Assembly Procedures

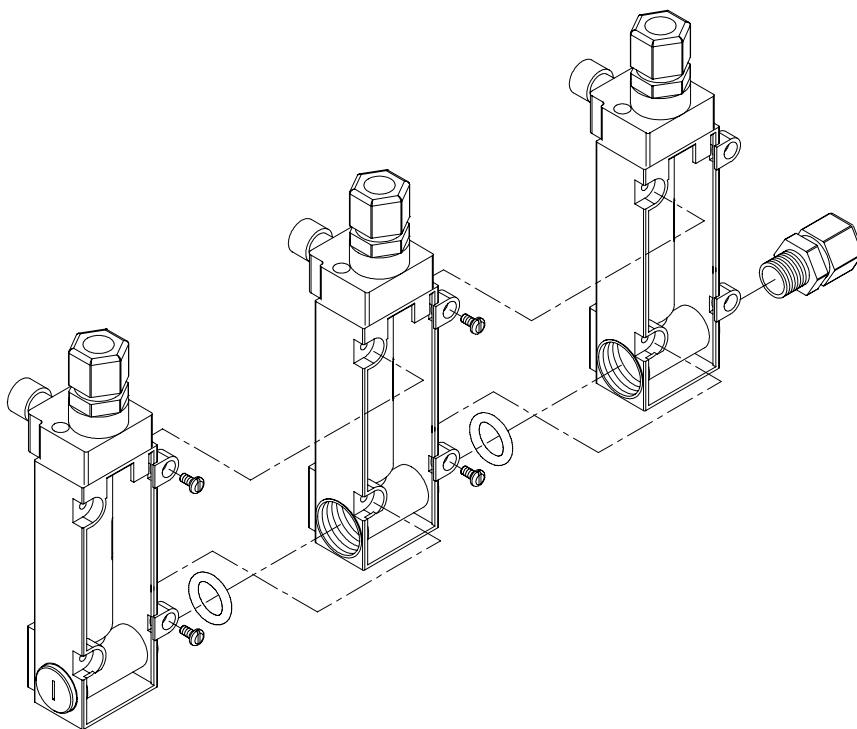
3 START-UP

Follow the instructions provided in the *NXT3000* vacuum regulator instruction manual 100.6701 for complete system start-up procedures.

After the system has been tested for leaks and is operating, adjust the rate valve to the desired gas flow rate. The flow rates are in PPD (pounds per day or kg/h as applicable) of chlorine.

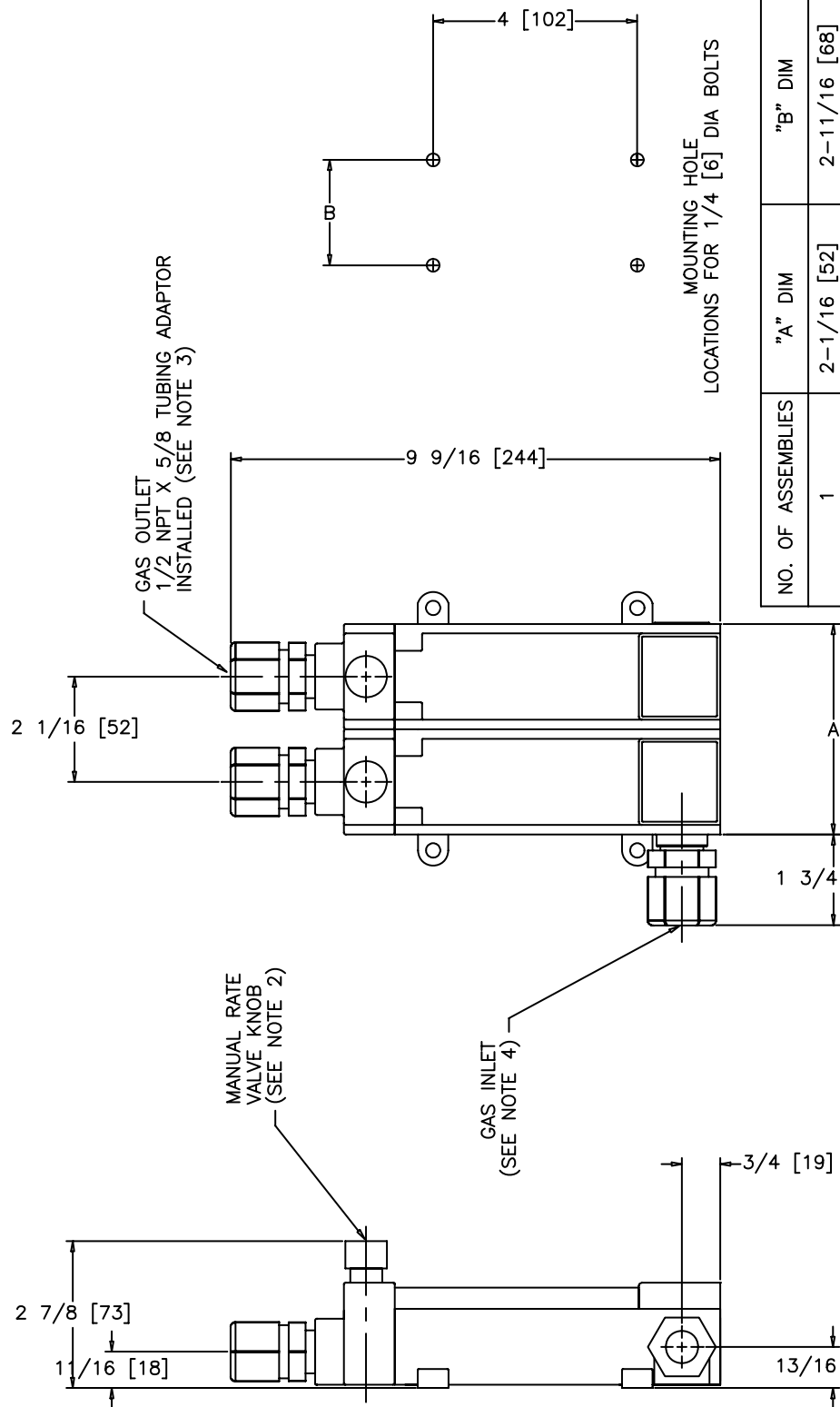
Read the flowmeter scale at the **center** of the ball.

NOTE: NEVER use the rate valve on the remote meter panel to shut off the gas supply. This valve is for adjusting flow rate while the system is in operation. If used for shut-off, this valve will be damaged. To shut off the gas, close the gas container valve.



Assemble the meter-rate valve assemblies and install the adaptor fitting as indicated. Then mount as described in Figure 4 and complete the interconnections as shown in Figure 1.

Figure 3 - Multiple Meter Assembly



NO. OF ASSEMBLIES	"A" DIM	"B" DIM
1	2-1/16 [52]	2-11/16 [68]
2	4-1/8 [105]	4-3/4 [121]
3	6-3/16 [157]	6-13/16 [173]
4	8-1/4 [210]	8-7/8 [225]
5	10-5/16 [262]	10-15/16 [278]

- NOTES:
1. DRAWING WITH CERTIFIED DIMENSIONS IS AVAILABLE UPON REQUEST.
 2. ON AUTOMATICALLY CONTROLLED SYSTEMS THIS VALVE IS REMOVED AND THE KNOB IS PERMANENTLY ATTACHED.
 3. ADAPTORS FOR 3/8 AND 1/2 INCH TUBING FURNISHED LOOSE.
 4. 1/2 NPT X 3/8, 1/2 AND 5/8 TUBING ADAPTORS FURNISHED LOOSE FOR CUSTOMER INSTALLATION. 1/2 NPT X 5/8 TUBING ADAPTOR SHOWN. (NOT FACTORY INSTALLED)

LEGEND: INCHES [MILLIMETERS]
100D1027

Figure 4 - Meter Assembly Dimensions

4 SERVICE

It is recommended that the Gas Dispensing System be inspected regularly and serviced at least once per year. Depending on usage, operating procedures, gas flowrate and or/gas quality the period between scheduled maintenance may have to be shortened. Operation experience will dictate the period needed to suit the particular site conditions.

Preventative maintenance kits are available from the factory. Each kit contains all the parts and detailed instructions that are required for complete maintenance. All resilient parts (O-rings, gaskets) that have been distributed during disassembly must be replaced during reassembly in order to insure safe, trouble free operation. **Failure to replace these parts may result in bodily injury.**

Preventative Maintenance Kit for chlorine and sulfur dioxide P/N 614S096U01.

For detailed component breakdown, refer to parts list 100.7602.

5 TROUBLESHOOTING CHART

Since the operating performance of the meter assembly can be effected by the vacuum regulator and ejector, also refer to the Troubleshooting Chart in bulletin 100.6701 and 122.6060.

TROUBLE	PROBABLE CAUSE	CORRECTIVE ACTION
1. The required gas feed rate is not achieved at start-up.	<ul style="list-style-type: none"> a. Insufficient ejector vacuum due to insufficient water supply pressure for existing back pressure conditions. b. Leakage at vacuum line connections, vacuum regulator and/or inlet to ejector. c. Vacuum line(s) crimped. d. Length of vacuum line(s) exceeds maximum allowable transport distance. 	<ul style="list-style-type: none"> a. Refer to Trouble 2. b. Inspect each connection and remake as necessary. c. Replace vacuum tubing and arrange line(s) to eliminate d. Refer to Bulletin 121.3003.
2. Flowmeter ball bounces and/or maximum gas feed rate cannot be achieved during normal operation.	<ul style="list-style-type: none"> a. Vacuum regulator inlet filter screen dirty. b. Rate valve dirty. c. Flowmeter dirty. d. Ejector water supply pressure fluctuating causing insufficient ejector vacuum. (Ball bouncing only) 	<ul style="list-style-type: none"> a. Replace gas inlet filter. b. Clean the rate valve. See Service section. c. Clean the flowmeter. See Service section. d. Check water supply pressure. Correct as necessary
3. Flooded metering tube.	<ul style="list-style-type: none"> a. Dirt on the ejector check valve seat, or worn seat 	<ul style="list-style-type: none"> a. Clean or replace ejector check valve seat. Refer to Ejector instruction manual 122.6006, 122.6010, 122.6015, or 122.6060.
4. Vacuum leaks	<ul style="list-style-type: none"> a. Rate valve o-rings worn. b. Tubing connector loose. c. Cracks in tubing 	<ul style="list-style-type: none"> a. Replace o-ring. b. Tighten tubing connector. c. Replace tubing.

Design improvements may be made without notice.

Represented by:



CAPITAL CONTROLS

Severn Trent Services

3000 Advance Lane Colmar, PA 18915

Tel: 215-997-4000 • Fax: 215-997-4062

Web: www.severntrentservices.com

E-mail: marketing@severntrentservices.com